

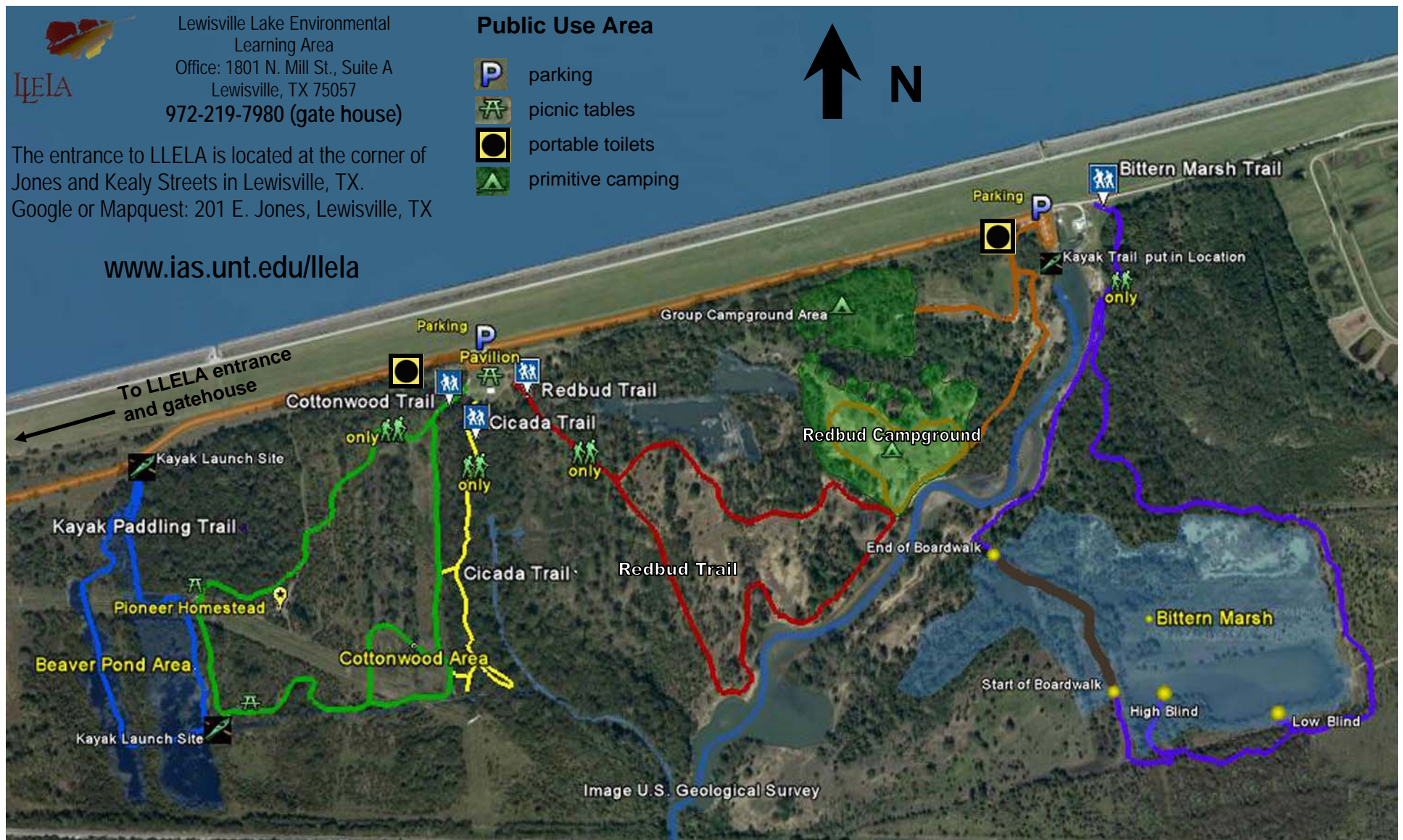

 Lewisville Lake Environmental Learning Area  
 Office: 1801 N. Mill St., Suite A  
 Lewisville, TX 75057  
 972-219-7980 (gate house)

The entrance to LLELA is located at the corner of Jones and Kealy Streets in Lewisville, TX.  
 Google or Mapquest: 201 E. Jones, Lewisville, TX

[www.ias.unt.edu/llela](http://www.ias.unt.edu/llela)

**Public Use Area**

-  parking
-  picnic tables
-  portable toilets
-  primitive camping



**Please remember:**

- Camp in designated areas only.
- Firewood is available in designated areas only. Fires may only be built in provided fire rings at campsites.
- Campground quiet hours are between 10 pm and 7 am.
- All vehicles and equipment are permitted only on designated roads/parking areas.
- Trails are for hiking only—no bicycles, horses, or motor vehicles of any kind. A rack is available in the Cicada Pavilion parking lot if you need to park a bike.
- No pets are permitted, except for service animals.
- No alcohol or fire-arms.
- Portable toilets are located near the parking areas.
- Potable water is available in several locations in the campground.



Michael Hampton

**The Cottonwood Trail** winds through wooded areas and prairie restorations-in-progress. The highlight is the 1870's Minor-Porter Log House. Log house tours are available; visit our web site for details. Length: 1.3 miles  
**The Cicada Trail** follows the historic channel of the Elm Fork through a hardwood forest. It is usually dry, because the river was moved during the dam construction. Length: 0.3 mile one way  
**The Redbud Trail** meanders through open grasslands and scattered woods to beautiful views of the Elm Fork. Length: 1.4 miles  
**The Bittern Marsh Wetland Boardwalk Trail** takes hikers through a bottomland hardwood forest to Bittern Marsh. Two viewing blinds at the marsh give birders, photographers, and hikers great views of waterfowl and other wildlife. Length: 2.1 miles

**Trail safety**

- Remain on designated hiking trails
- Consult the map while hiking
- Return to your vehicle by closing time
- Carry a cell phone for 911 emergencies.

  
 UNIVERSITY OF NORTH TEXAS